

CALL FOR PEACE

JDM

Moderato ♩ = 80

Alto

8

15

23

29

35

43

49

52

54

pp

mf

sfz

p

mp

mf

2
58

65

mf

67

70

72

f

74

ff *f* *rit.*

81

87

♩ = 60 ♩ = 60

20 5 3

PRENDRE LE TENOR

118

Ténor

pp subito

124

♩ = 60 Violent

f

130 Silence 3

135 4 rit.

145 Silence $\text{♩} = 100$ Key noise *p*

149

152

155 *tr*

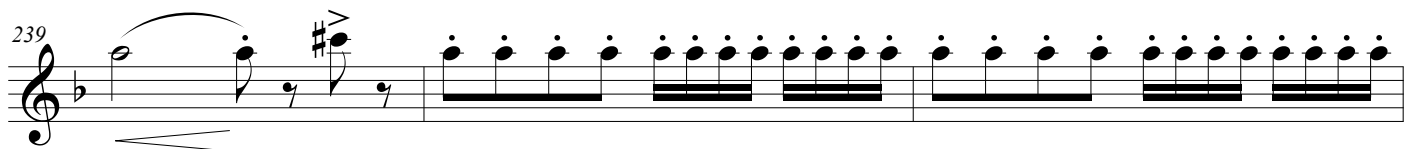
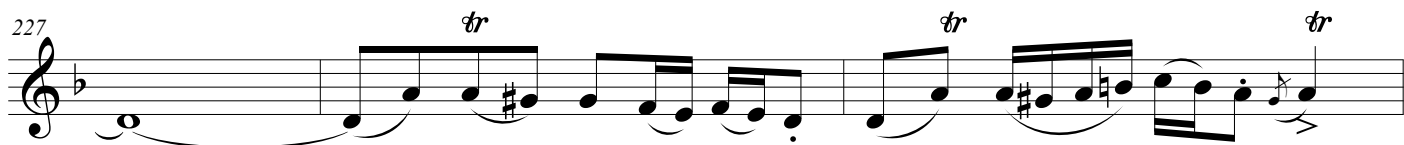
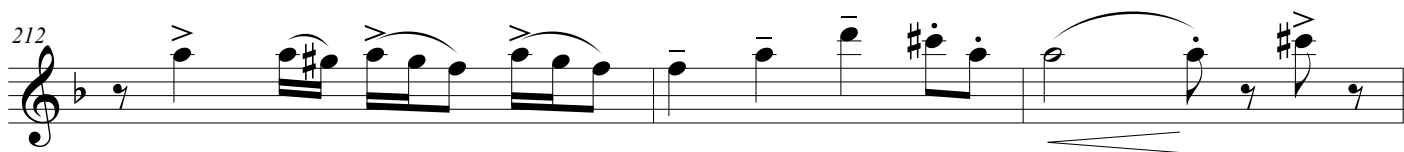
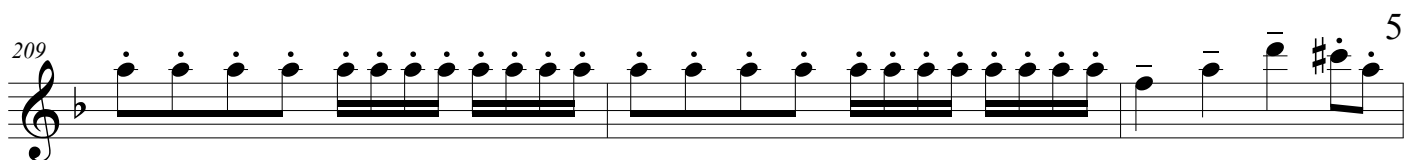
158 *tr* *tr* *tr* *tr*

161 $\text{♩} = 180$

165 Slap ouvert 3

173

[illegible]



6
242

245

248

250

252

The image shows a musical score for 'The Rose Tree' in G major, measures 242-252. The score is written for a single melodic line on a treble clef staff. The key signature has one sharp (F#). The time signature is 6/8. The melody consists of eighth and sixteenth notes, with some measures containing beamed sixteenth notes. There are some editorial markings, including a 'tr' (trill) and a 'gr' (grace note) in measure 250, and a 'tr' in measure 252. The score is divided into measures by vertical bar lines.